



# GMT MONTHLY MEMBERSHIP PROGRESS REPORT

Results as of: 10/31/2023

Multiple District 9

LOCATION: IOWA

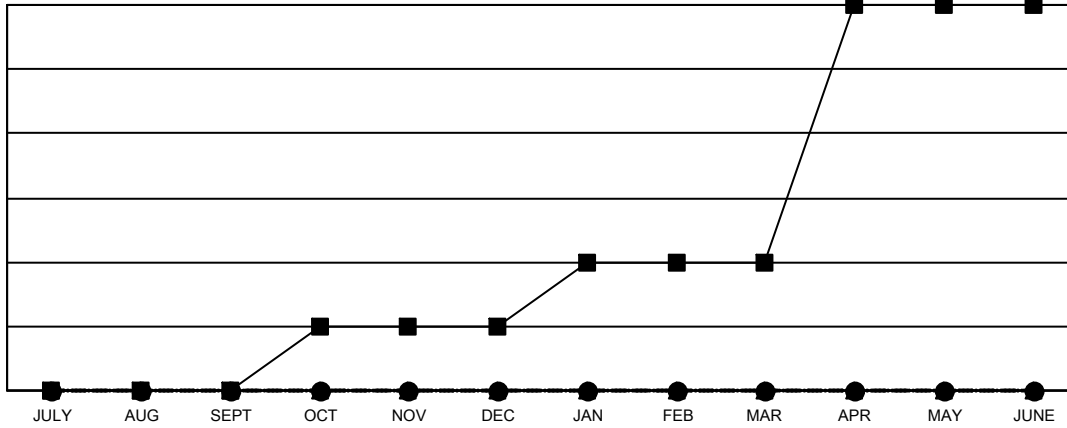
GMT: OPEN

GMT CA 1

Clubs			
RESULTS FOR 2023-2024			
QUARTER	NEW CLUB GOAL	NEW CLUBS	DROPPED CLUBS
JULY/AUG/SEPT	0	0	1
OCT/NOV/DEC	1	0	0
JAN/FEB/MAR	1	0	0
APR/MAY/JUNE	4	0	0

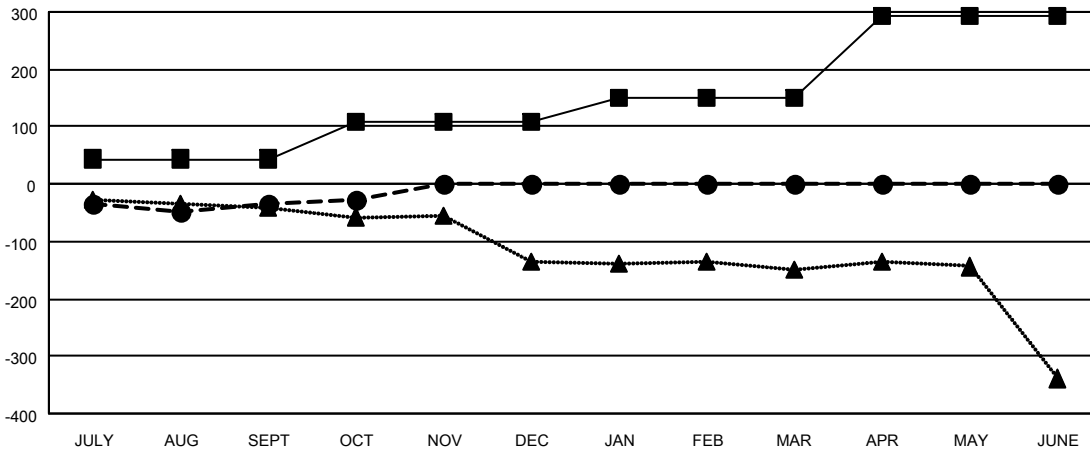
Members			
RESULTS FOR 2023-2024			
QUARTER	MEMBER GROWTH NET GOAL	MEMBER GROWTH ACTUAL	DROPPED MEMBERS ACTUAL (including transfers)
JULY/AUG/SEPT	44	144	168
OCT/NOV/DEC	63	66	56
JAN/FEB/MAR	43	0	0
APR/MAY/JUNE	144	0	0

GOALS AND ACTUAL NEW CLUBS CUMULATIVE



- - CURRENT YEAR GOALS FOR NEW CLUBS
- - CURRENT YEAR ACTUAL NEW CLUBS
- ▲ - LAST YEAR ACTUAL NEW CLUBS

GOALS AND ACTUAL MEMBERS CUMULATIVE



- - MEMBER GROWTH NET GOAL
- - MEMBER GROWTH ACTUAL
- ▲ - LAST YEAR MEMBERSHIP ACTUAL

DROPPED CLUBS: 1	89 CLUBS OF 273 ADDED 1 OR MORE NEW MEMBERS	<b>GENDER DISTRIBUTION</b>
		MALE 4,682 (71.62%)
		FEMALE 1,855 (28.38%)
<b>DROPPED MEMBERS</b>	<a href="#">CLICK HERE FOR CUMULATIVE MEMBERSHIP DATA</a>	TOTAL FAMILY UNIT MEMBERS 1,409
DECEASED 38		FAMILY MEMBERS PAYING HALF DUES 717
CLUB CANCELLED 0		
OTHER 187		
<b>TOTAL 225</b>		